

# What is a Reform University Today?

Part II  
Research



# What is a Reform University Today?

## Part II Research

### Reform and Research

The purpose of reform universities is not only to transform higher education, but also to renew research. Their role has especially been to challenge narrow disciplinary research and open up new forms of collaboration between disciplines as well as with the rest of society. Since the 1960s reform universities have therefore also introduced new ways of organizing research, which cut across disciplinary divisions, opened up the university to the outside world, and enabled researchers to address contemporary challenges. In addition, they have prioritized fields of research that were socially relevant and/or had not been prioritized at traditional universities. This second part of the report investigates how these priorities are reflected in the macrostructures of research of the ERUA universities today.

### Organisation of Research

When UKON was founded in 1966, research was not only organized in departments/“disciplinary areas,” but also in units, partly independent of the educational structure (Dahrendorf 1966). Temporary working groups and larger more permanent research centers should allow researchers to address pressing contemporary issues, drawing upon the expertise of several disciplines. A similar organization of research, which allows collaboration across departmental and disciplinary boundaries, still exists at most ERUA universities.

### Organisational Models

The organisation of the ERUA universities has already been discussed under Organisation of Education in the first part of the report. Below and beyond these organizational units, the universities have also all introduced different units, which

organize research. For a full overview of these organisational units and links to descriptions of their activities, see also the appendices 8 and 9.

UKON today operates with professorships, with associated ph.d. students, assistants, and post.docs, as well as groups and centers, under each department/“disciplinary area”. The university also has several interdisciplinary clusters of excellence, collaborative research centers, research centers, research groups, and research training groups, graduate schools as well as associated institutes. In addition, Konstanz has the *Zukunftskolleg* (Institute for Advanced Study for Junior Researchers), which supports early career researchers across different fields.

Paris 8 has 33 laboratories (research units and joint research units) all are independent, connected with external institutions (other universities, the French National Center of Scientific Research - CNRS) as well as other independent research structures (e.g. scientific interest groups) connected with one of Paris 8’s laboratories and other external research structures. The doctoral schools are based on several laboratories (UR and UMR) sharing the same wide field of disciplines.

RUC has several research groups and centers, under each of its four departments/“institutes.” Apart from these, the university has some centers that are not connected to specific educational units, but reflect university priorities and support interdisciplinary research. The university also has four doctoral schools for its four departments/“institutes.”

Research at UAegean is organized in departments that are located under each of its six schools. The schools are placed on six different islands in the Aegean Sea. These departments have several laboratories/research groups in which the research is conducted. The departments where research is conducted are the same departments that constitute the educational framework.

Research at NBU is organized primarily at a department level. Many of the departments are supported by research laboratories or other units for applied research – 18 in all. Scholars with excellent performance in research may establish research centers, where the workload is predominantly scientific and not predominantly

teaching and administration as in departments. At the present moment there are six such centers. Ad hoc projects and interdepartmental research collaborations are supported by the Strategic Development Fund.

## Conclusion

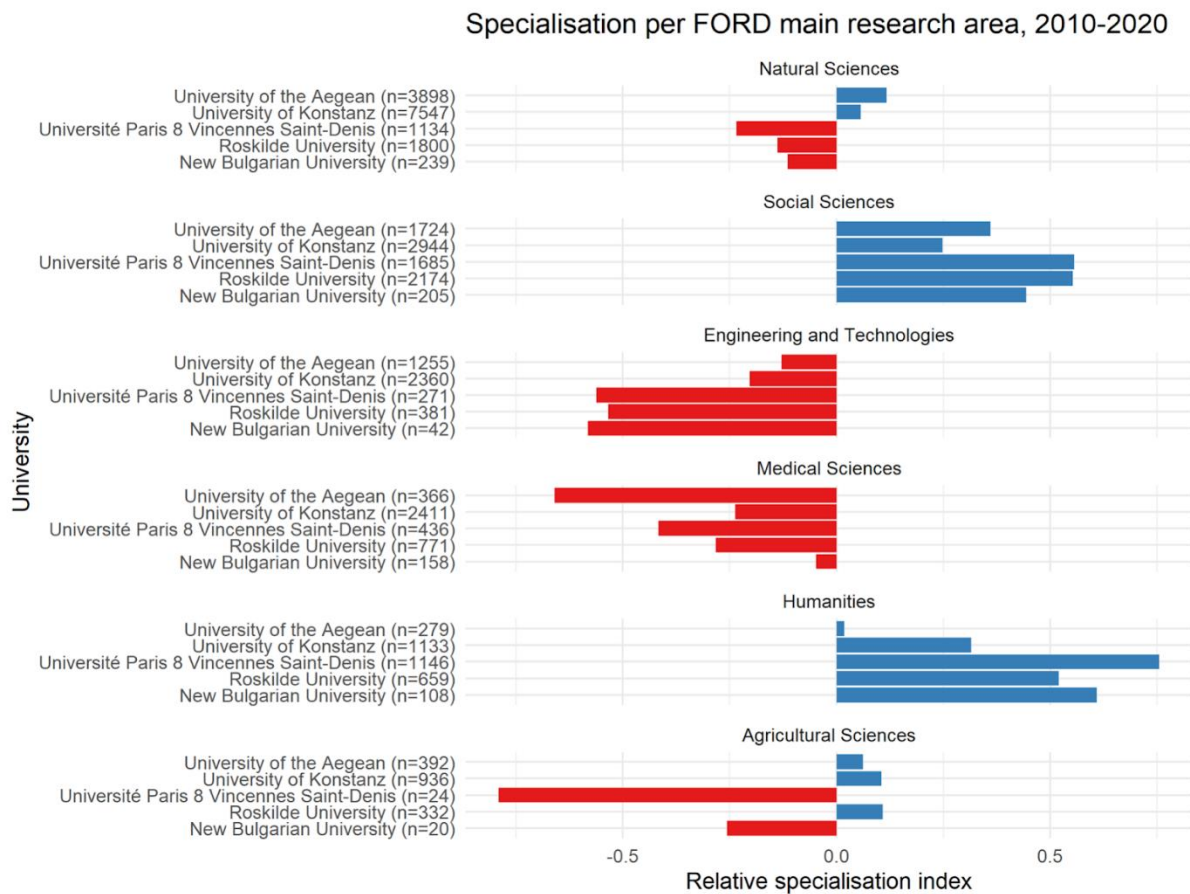
At two of the universities, Paris 8 and NBU, research and education are organized in parallel structures. At Paris 8 through a distinction between educational units and laboratories, groups, and centers. At NBU through a division between schools, which are responsible for education, and departments, laboratories, and centers. RUC and UKON also have an independent research organisation, through centers, clusters of excellence, and similar, which are not connected to specific educational units. These are supposed to combine insights from different parts of the universities on specific topics and problems. However, most of the research units, centers, research groups, and professorships are connected to the same organisational units that are also responsible for education. The same is the case at UAegan, where laboratories are part of specific departments.

## Research Profile

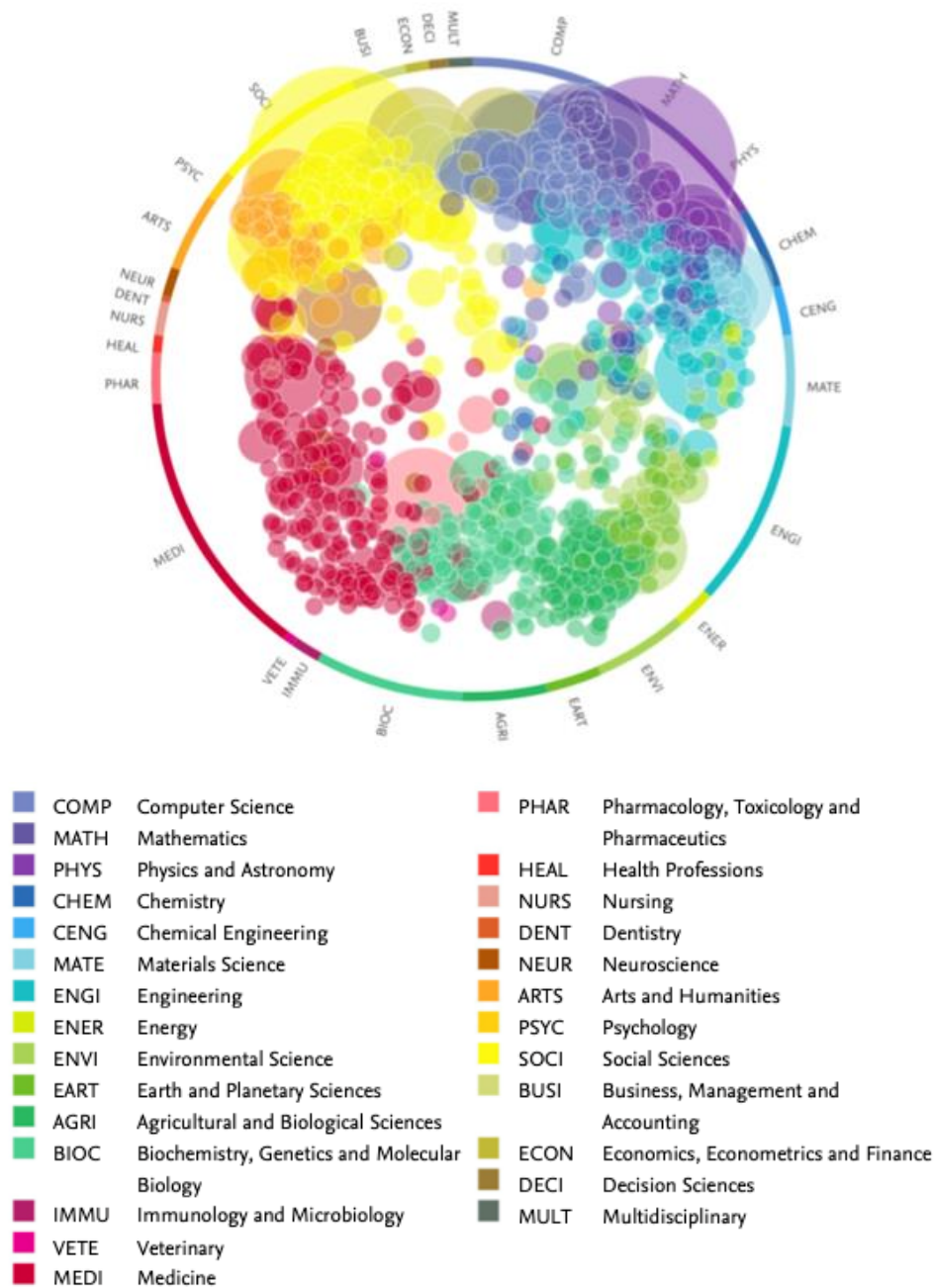
The following analysis is based upon Scopus data (June 2021). This dataset prioritizes publications in English language journals at the expense of books as well as publications in other languages. For the ERUA universities, which are particularly strong in the humanities and social sciences as well as in research that engages with local communities, this may give a somewhat inaccurate impression of the research output. It may also prioritize Nordic and Western European countries, at the expense of Eastern European Countries that in the humanities and social sciences tend to publish more in national languages (Kulczycki et al., 2018). However, the Scopus data allow for a first overview, which can be further investigated and qualified in later reports.

## Research Fields

The publication profile of the ERUA universities is similar to the educational profile. In the following table, the distribution of publications of the ERUA universities has been compared to the normal distribution of publications in the Scopus database (on the methodology, see also Hansson et al. 2019, 75). Compared to other institutions, the ERUA universities have a larger share of their publications in the humanities and social sciences, including the fields described as human sciences and business studies in the first part of the report, and a smaller share of their publications in medical sciences and engineering/technical sciences, here not including computer and information sciences. This indicates a high degree of specialisation within and across the alliance. However, the degree of specialisation is smaller at UAegean and UKON than at Paris 8, RUC, and NBU. More differences appear when you look at the distribution of publications between subfields, see under Research Subfields below.



The picture is confirmed if you look at specific topics on which ERUA researchers publish, as shown in the graph below. The natural sciences here appear more significant, because of the high publication volume. The human and social sciences and the biological and environmental sciences are still prominent. The contributions to medical science are interdisciplinary, as indicated by their position closer to the middle of the graph below, and engineering/technical sciences are limited, apart from computer and information science, and also largely interdisciplinary.

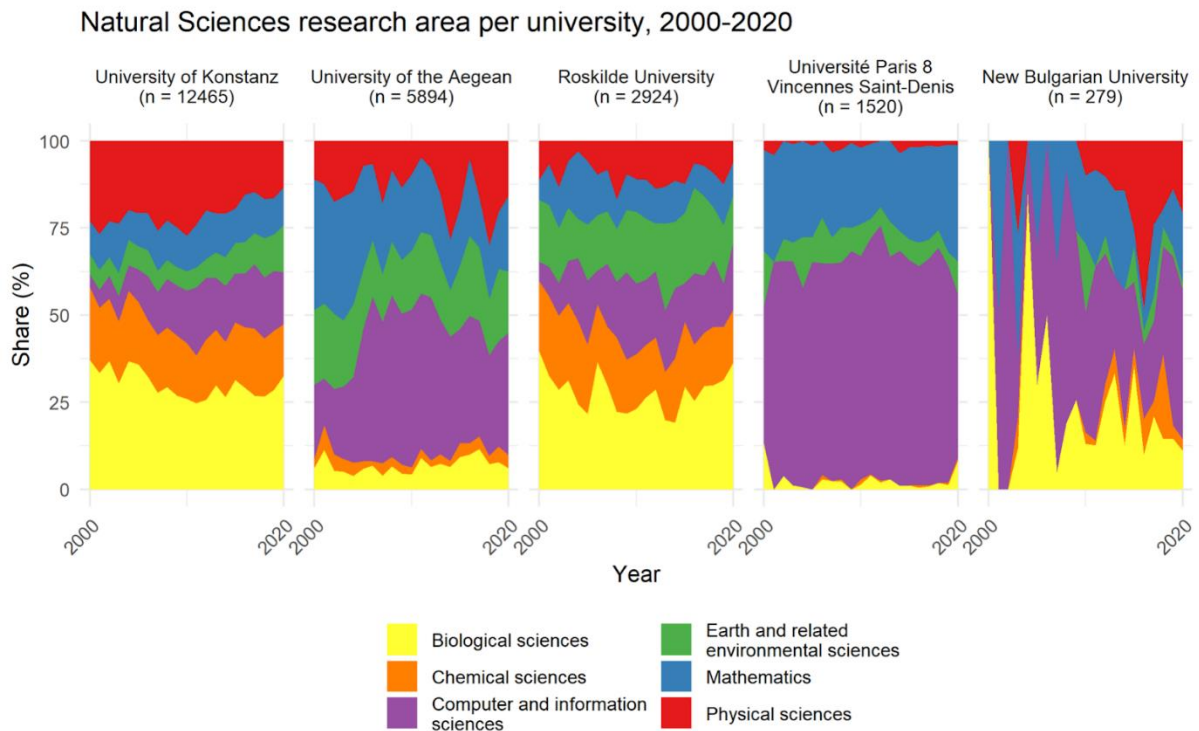


Topic Clusters 2015-2019. All ERUA universities.

## Research Subfields

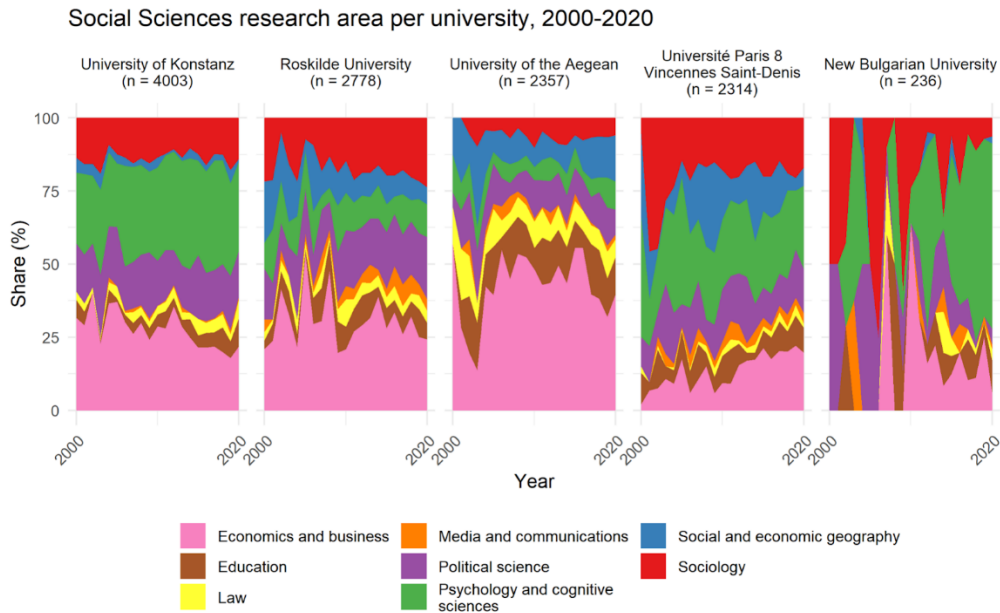
There is more variation in the distribution of publications within the FORD main research areas between the different ERUA universities. These differences mirror the variations in educational profiles, discussed in the first part of the report.

In the natural sciences, UKON and RUC have the highest number of publications in the biological sciences, while UAegean and Paris 8 have the highest number of publications in computer and information sciences. However, UKON and RUC also have a strong presence in computer and information sciences, and UAegean also has a strong presence in biological sciences. Paris 8 has very few science publications outside the field of computer and information science and mathematics. Because of the higher number of publications at UKON, the university is strongly represented in all fields. All 4 universities have a presence in mathematics. The numbers are too small and the annual variations too big at NBU to draw any clear conclusions.

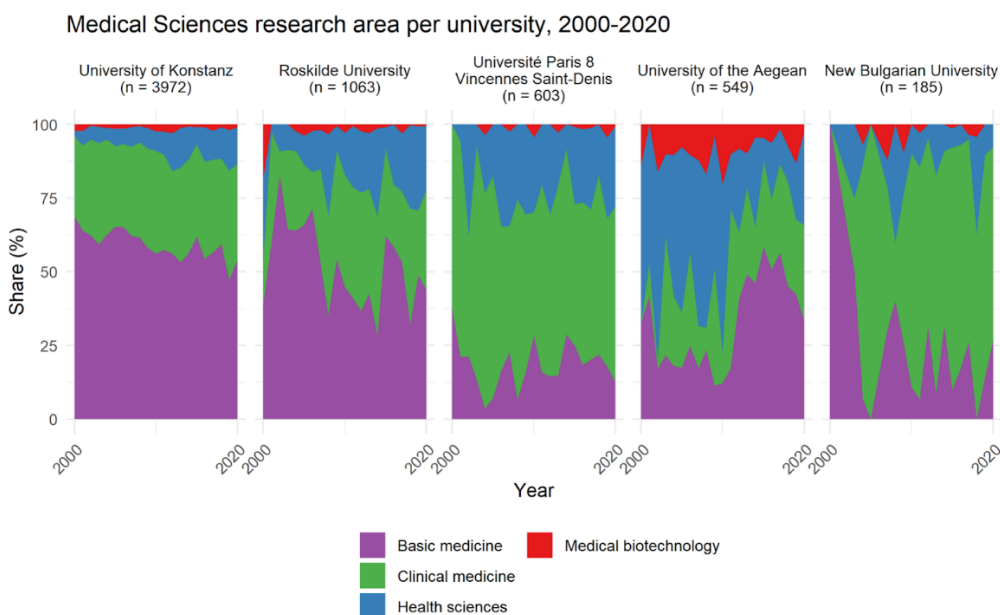


The social sciences contain many of the fields, which in the educational overview were described as human sciences and business. UKON and Paris 8 have a particularly strong profile in psychology and cognitive science, while UKON, RUC, and UAegean

have a particularly strong profile in economics and business. There is a shared interest between RUC, UAgean and Paris 8 in geography and between UKON, RUC, and Paris 8 in sociology and, to a lesser extent, between all four universities in political science. Again, the numbers are too small and the variation too big at this level to draw any conclusions for NBU.

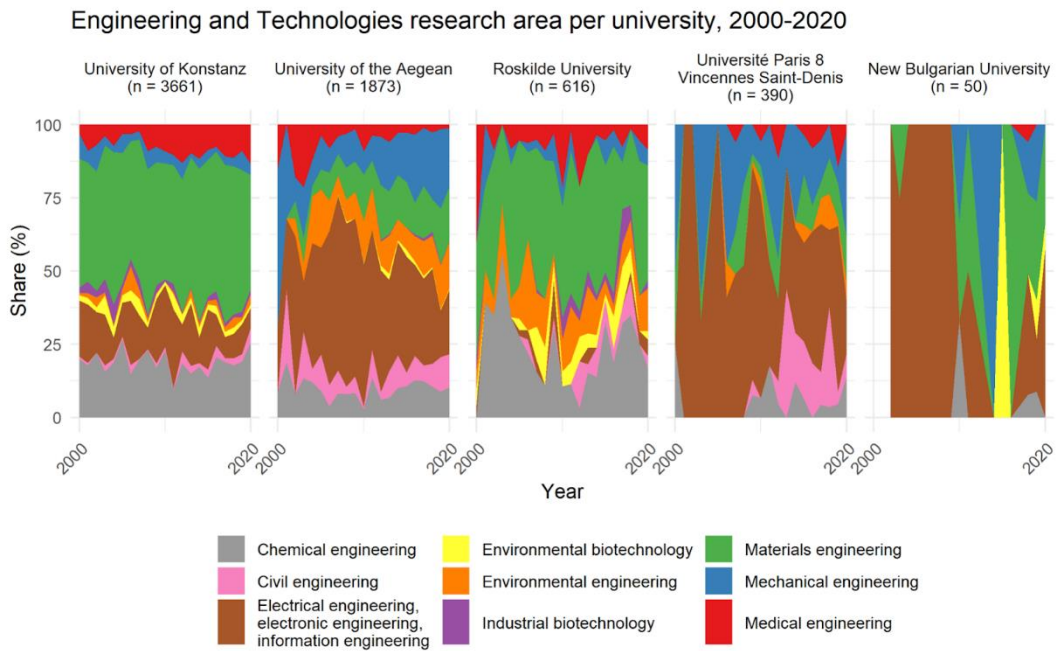


In medicine, there is a shared interest between UKON, RUC, and UAgean in basic medicine, reflecting their profile in biological and life sciences, and a presence of UKON, RUC, Paris 8 in clinical medicine. The numbers are too small to draw clear conclusions for NBU.



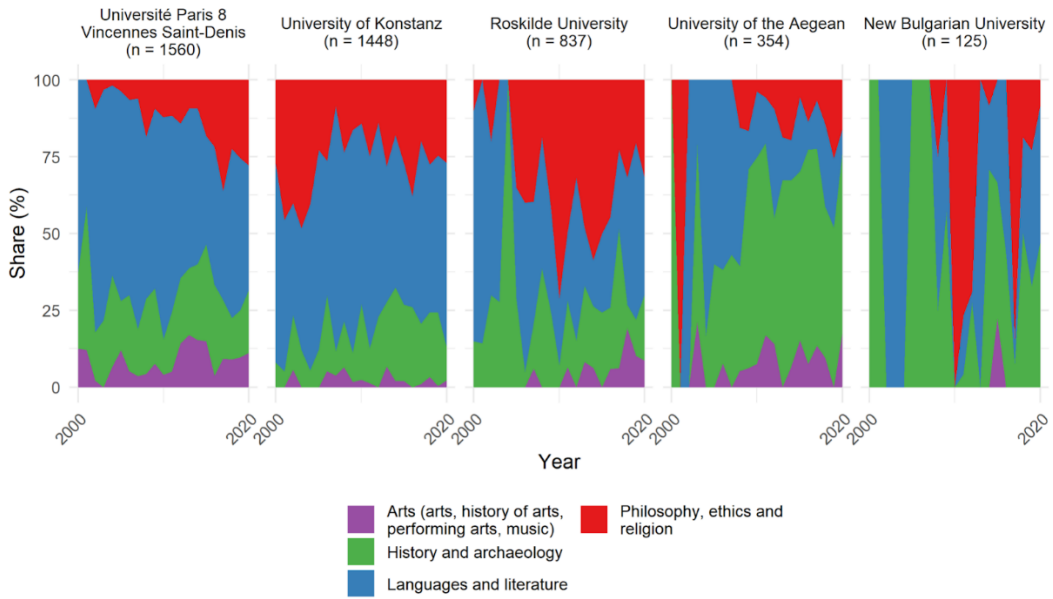


In engineering/technical sciences, there is a shared interest between UKON, UAegean, and RUC in materials engineering and chemical engineering, between UKON, UAegean, and Paris 8 in electrical, electronic, and information engineering. Again, numbers are too small and the annual variations too big to draw clear conclusions for the NBU.



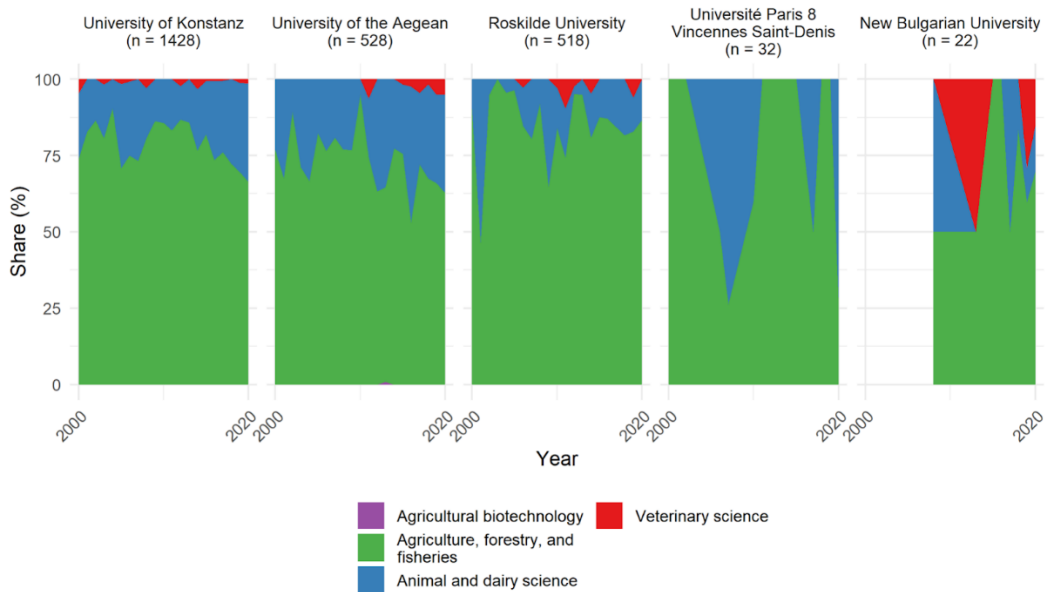
In the humanities, there is a shared interest in languages between UKON and Paris 8, reflecting their educational profile, as well as a shared interest between UKON, UAegean, Paris 8, and RUC in history and philosophy. The numbers are too small and the annual variations too big to draw clear conclusions for NBU.

### Humanities research area per university, 2000-2020



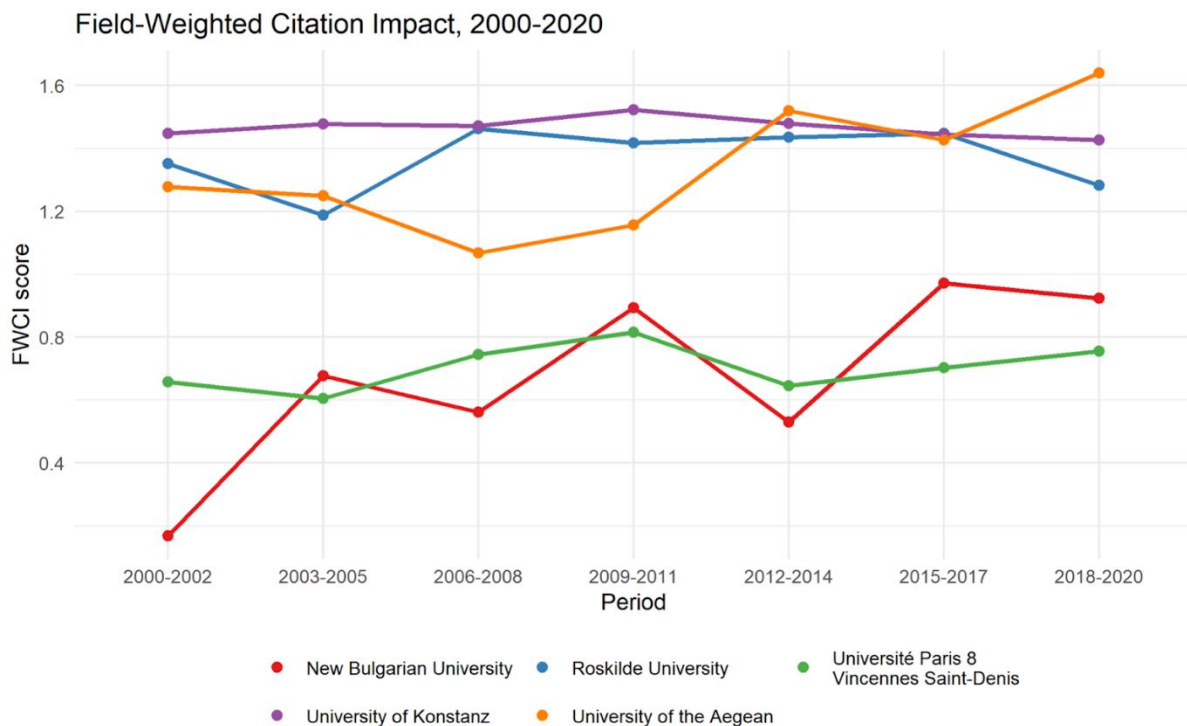
Finally, in agricultural sciences, there is a shared interest between UKON, UAegean, and RUC in the field of agriculture, forestry, and fisheries, again reflecting the interest in biological and life sciences. The field is almost non-existent at Paris 8 and NBU.

### Agricultural Sciences research area per university, 2000-2020



## Research Impact

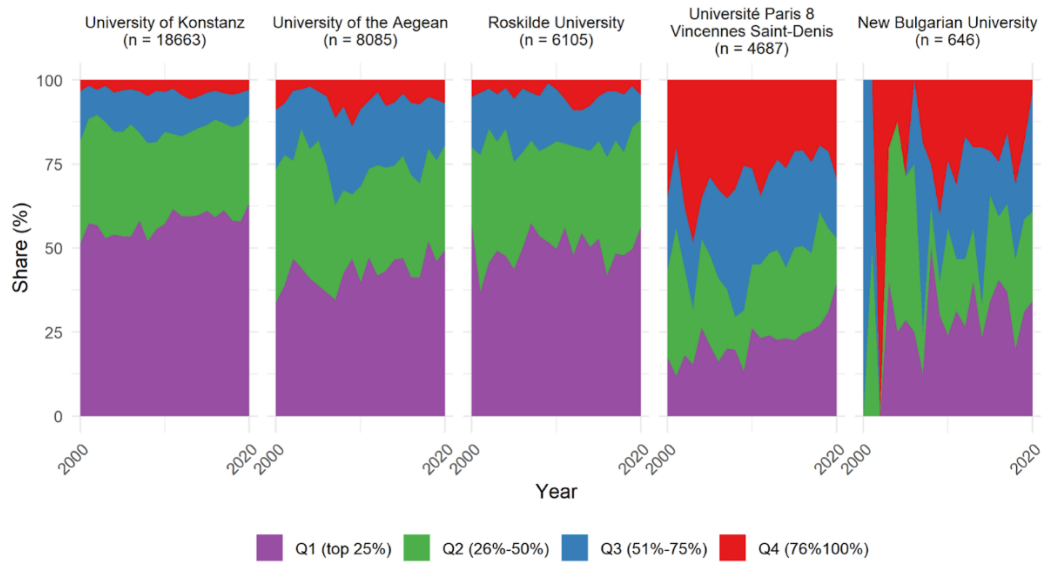
In volume of publications, UKON outnumbers the other universities, which reflects a higher number of researchers as well as higher level of research funding. However, the relative citation impact of publications is similar to UAegean and RUC. The citation impact of publications at Paris 8 and NBU is somewhat lower than the other universities, but similar to one another. In the graph below, the numbers are weighted according to fields, so these differences cannot be explained with differences in research specialization. Score 1 is the average impact of all publications weighted according to field.



A similar image emerges if one compares the output of the universities according to journal impact, weighted according to fields. Researchers at UKON, UAegean, and RUC are primarily publishing in the top 50% journals in their field. The average is lower at Paris 8 and NBU.

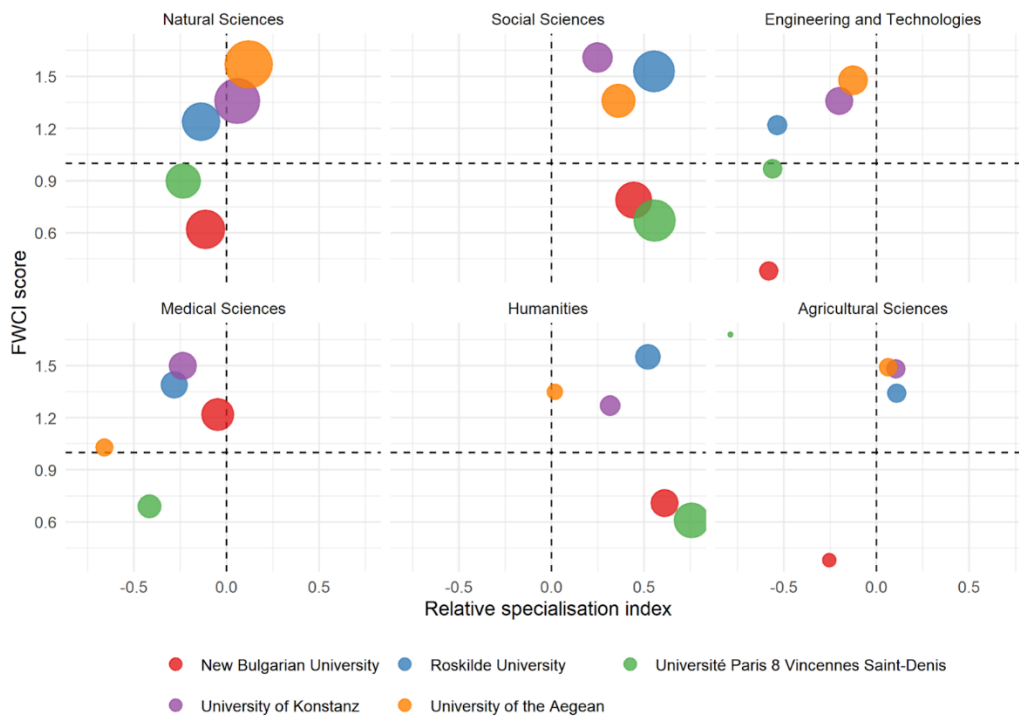
### Share of publications per Journal quartile by SNIP\*, 2000-2020

\*Source Normalized Impact per Paper



The impact of research does not change significantly according to fields of specialisation or publication volume. The latter is indicated in the graph below by the size of dots, indicating the relative share of publications at that university. The ERUA universities have approximately the same relative impact across the different fields.

### Specialisation vs. FWCI per FORD main research area, 2010-2020



## Research Funding

The following is based upon funding from the Horizon 2020 program. It has not been possible for this first report also to include information about national and private funding. This may change the overall picture of the universities relative strengths and ability to attract funding. The distribution depends upon the priorities of the Horizon 2020 program and the match between these priorities and the profiles of the ERUA universities. However, the Horizon 2020 program allows for a first overview, which can be further investigated in later reports.

### Horizon 2020

The following table presents the five alliance members repatriation of Horizon 2020 funding, divided after programs. Horizon 2020 is so far the largest research and innovation program in the EU, with almost 80 billion € available for funding, since 2014. The table compares how many projects have been funded by Horizon programs, the amount in € and the percentage that each program constitutes of the university's overall repatriation of Horizon 2020 funding (eCORDA). It shows that UKON by far repatriates most funding from Horizon programs, with an overall funding of over 30 million €. On the other hand, Paris 8 has 3 Horizon funded projects with a total amount of 545.032€. The Societal Challenges program is the most popular program for all universities except Konstanz, constituting over half of the 4 other universities repatriation of Horizon funding. For a full list of Societal Challenges projects supported by the Horizon 2020 program with ERUA involvement, see also appendix 10. The main reason for UKON's major Horizon funding is its success in applying to the "Excellent Science" program, with 39 Horizon projects under this program.

The ERUA partners recently fortified their collaboration with the project "Research and Engagement for the European Reform University Alliance (re:ERUA)." This achievement has not been yet registered in the table below, which only includes signed contracts for Horizon2020 projects by June 2021.

		Roskilde	Konstanz	Paris 8	NBU	UAegean
<b>Societal Challenges</b>	Percentage of EC-contribution	75,2%	19,8%	53,0%	75,7%	77,1%
	EC-contribution €	4,917,043	6,017,63	288,817	988,025	6,207,906
	Projects	15	13	2	6	14
<b>Excellent Science</b>	Percentage of EC-contribution	22,2%	75,6%	47%	20,1%	11,1%
	EC-contribution €	1,450,166	22,979,272	256,214	262,000	890,422
	Projects	5	39	1	3	3
<b>Industrial Leadership</b>	Percentage of EC-contribution		4,6%			8,5%
	EC-contribution €		1,395,011			681,875
	Projects	1	3			3
<b>Science with and for Society</b>	Percentage of EC-contribution				4,2%	1,4%
	EC-contribution €				54,716	113,439
					1	2
<b>Spreading Excellence and Widening Participation</b>	Percentage of EC-contribution	2,6%				2,0%
	EC-contribution €	172,794				159,181

	Projects	1				1
<b>Total</b>	Percentage of EC-contribution	100%	100%	100%	100%	100%
	EC-contribution in €	6.540.003	30.392.045	545.032	1.304.741	8,052,824
	Projects	22	55	3	10	23

## Conclusion. Part II

All of the ERUA universities have organisational units, centers, groups, laboratories, etc, that are responsible for research. Many aim at fostering interdisciplinary research and collaboration across the universities as well as with external partners. Many are oriented towards contemporary problems and challenges. Otherwise conclusions about the research profile can only be preliminary. They are based upon Scopus and Horizon2020 data, which only allowed for a limited view of research output and research funding. However, based upon this data and compared to other institutions, the ERUA universities appear to have a particular strength in the humanities and social sciences and, for UKON and UAegean, also in the natural sciences. Contributions to medical sciences are limited, mostly interdisciplinary and/or to basic medicine, based upon the strength of the ERUA universities in the life sciences. Contributions to engineering/technical sciences are also limited compared to other institutions. However, it should be noted that computer and information sciences, where the universities are particularly strong, in this survey are counted among the natural sciences. UKON has a higher publication volume than the other partners. However, when it comes to citation impact and publication patterns, the universities are similar. UKON, RUC and UAegean are very close to one another. The same is the case for Paris 8 and NBU. When it comes to research funding from Horizon2020, the preferred source of most of the ERUA universities is the Societal Challenges program. UKON stands out with a large number of projects from the Excellent Science program.

## Conclusion. Part I and II

The reform universities of ERUA were all created as alternatives to the traditional universities of their countries. They were not just expansions of the existing system of education, but should solve problems that other universities did not. They were created as places of experimentation and renewal. They should give space to new academic developments and new pedagogies, and bring higher education to new places. Because they emerged as answers to local problems and challenges and at different times, they are also very different. Different answers are needed if one wants to renew an overspecialized German academic system in the 1960s, to bring higher education to Greek islands in the periphery of Europe in the 1980s, or to reform a postcommunist academic system in Bulgaria in the 1990s. However, despite these differences, there are also clear similarities between the universities of ERUA. These similarities are the results of the wish for renewal and a keen interest in contemporary challenges.

The ERUA universities all have challenged how universities are organized. Instead of the traditional structure of faculties and departments, they have introduced new ways to ensure collaboration, interdisciplinarity, and societal engagement. They have educational units that bring several disciplines together, and research centers and groups that connect scholars across disciplinary boundaries. They have introduced new institutional innovations that connect the university to society at large and enable the co-production of knowledge. They have also introduced new educational formats that bring the study experience into relation to the rest of the world. Beyond the normal coursework, students are encouraged and enabled to acquire skills and qualifications that can enrich their personal lives and prepare them for future careers.

The primary focus of the ERUA universities is the liberal arts in the humanities, social sciences, and natural sciences as well as, at Paris 8, the fine and performing arts. Unlike many liberal arts institutions, however, they have a strong interest in applied fields and in studies of immediate relevance to the contemporary world. They are cultivating fields, such as political science and public administration, the human sciences, computer and information sciences, life sciences and environmental studies, and business and management studies.



So, to return to the original question of this report, what is a reform university today? The reform universities were all created as transformative institutions, as places for experiments and renewal. They remain so today and are still developing. However, the many experiments since the 1960s have also resulted in similar outcomes. A reform university today is a university, which not only contributes to human understanding at the forefront of research, but also is engaged with the world and focused on contemporary problems and challenges. To address these problems and challenges, the university brings together academics and students from different disciplines and connects them with the rest of society. Finally, it is a place that helps students develop, not only as academics, but also as human beings and citizens.

## References

Charle, Christophe. "Patterns." In *A History of the University in Europe*, edited by Walter Rüegg, vol. 3: *Universities in the Nineteenth and Early Twentieth Centuries (1800-1945)*, 66-80. Cambridge: Cambridge University Press, 2004.

Dahrendorf, Ralf. "Über die Universität Konstanz." *Konstanzer Blätter für Hochschulfragen* 4, no. 4 (November 1966): 5-14.

*Decret no. 68-1106 du 7 decembre 1968. Création à Vincennes d'un centre universitaire ayant statut de faculté* <http://www.ipt.univ-paris8.fr/hist/documents/Decret-creation.htm>

Dorland, Jens, et al. "Space Configurations for Empowering University-Community Interactions." *Science and Public Policy* 46, no. 5 (2019): 689-701.

eCORDA = Signed projects, eCORDA H2020 database, 2021-06-02

Hansen, Else. *En Koral i tiden strøm: RUC 1972-1997*. Roskilde: Roskilde Universitetsforlag, 1997.

Hansson, Gustav et al., *The Swedish Research Barometer: The Swedish Research System in International Comparison*, 2019.

<https://www.vr.se/english/analysis/reports/our-reports/2019-09-16-the-swedish-research-barometer-2019.html>

History NBU. <https://nbu.bg/en/about-nbu/new-bulgarian-university/history>

History Paris 8: <https://www.univ-paris8.fr/Historique-de-Paris-8>

History UAegean. <https://www1.aegean.gr/aegean/en/history.htm>

Jöns, Heike. "Modern School and University." In *A Companion to the History of Science*, edited by Bernard Lightman, 372-90. Hoboken: Wiley Blackwell, 2016.

Kulczycki, Emmanuel et al. "Publication patterns in the social sciences and humanities: evidence from eight European countries." *Scientometrics* 116 (2018):463-486.

Mälzer, Moritz. *Auf der Suche nach der neuen Universität: Die Entstehung der "Reformuniversitäten" Konstanz und Bielefeld in den 1960er Jahren*. Göttingen: Vandenhoeck & Ruprecht, 2016.

Menand, Louis. *The Marketplace of Ideas: Reform and Resistance in the American University*. New York: Norton, 2010.

Paulus, Stefan. *Vorbild USA? Amerikanisierung von Universität und Wissenschaft in Westdeutschland 1945-1976*. Munich: Oldenbourg, 2010.

Pellew, Jill, and Taylor, Miles, eds., *Utopian Universities: A Global History of the New Campuses of the 1960s* (London: Bloomsbury Academic, 2021).

Schregel, Susanne. "Interdisziplinarität im Entwurf: Zur Geschichte einer Denkform des Erkennens in der Bundesrepublik (1955–1975)." *N.T.M* 24 (2016): 1-37.

Soulié, Charles, ed., *Un mythe à détruire? Origines et destin du Centre universitaire expérimental de Vincennes*. Paris: Presses Universitaires de Vincennes, 2012.

## Appendixes

1. Overview of Macrostructures of Education
2. General Education Knowledge Courses at NBU
3. Arts and Sports Courses at NBU
4. Detailed Overview over Bachelor Programs at Paris 8
5. Overview of Bachelor and Master Degrees
6. Open Laboratories
7. Collaboratories
8. Overview of Macrostructures of Research
9. Overview of Professorships at UKON
10. Research Projects under Horizon 2020. Societal Challenges.



Appendix VIII



# Overview of Macrostructures of Research

## Research Structure at ERUA-universities

The purpose of this document is to map current research structures of the ERUA universities, through a schematic presentation and an overview of departments, research centres, and research groups. As the universities have different structural set-ups, it is not possible to create identical maps. However, the map of the universities follow an overall structure,

with columns that present the various departments at the respective university, and the different research centres and groups that belong under them. If possible the unit has a cyberlink that leads to the webpage of the particular centre or group.

## Organization of research departments (institutter<sup>1</sup>), centres and groups at Roskilde University

Department of Communication and Arts (DCA) (Institut for Kommunikation og Humanistisk Videnskab)		Department of People and Technology (DPT) (Institut for Mennesker og Teknologi)		Department of Science and Environment (INM) (Institut for Naturvidenskab og Miljø)		Department of Social Science and Business (DSSB) (Institut for Samfundsvidenskab og Erhverv)	
<i>Centres</i>	<i>Groups</i>	<i>Centres</i>	<i>Groups</i>	<i>Centres</i>	<i>Groups</i>	<i>Centres</i>	<i>Groups</i>
<u>Centre for News Research</u> (In danish)	<u>Audiences &amp; Mediated Life</u>  <u>Dialogical Communication</u>  <u>Global and Trans-national History</u>  <u>Journalism and Democracy</u>  <u>Intercultural Studies</u>  <u>Media and Culture</u>  <u>Language, Culture and Cognition</u>  <u>Public</u>	<u>Centre for Action Research and Democratical Societal Change</u>  <u>Centre for Working Life Research</u> (In danish)  <u>The Danish Centre for Research in Early Childhood Education and Care</u>  <u>Centre for Maritime and Marine Research</u>  <u>Centre for Organisational</u>	<u>Working Life</u>  <u>Childhood, Youth and Family Life Research</u>  <u>Sustainable Digitalization</u>  <u>Critical University Studies</u>  <u>Gender, Body and Everyday Life</u>  <u>METRIK</u>  <u>Organisation, Ethics &amp; Social Sustainability</u>	<u>Glass and Time</u>  <u>Centre for Frustrated Molecular Interactions</u>  <u>PandemicX Centre</u>  <u>Centre for Mathematical Modeling - Human Health and Disease</u>	<u>Chemistry</u>  <u>Mathematics and Physics (IMFUFA)</u>  <u>Environmental Dynamics</u>  <u>Molecular and Medical Biology</u>	<u>Centre of African Economies</u>  <u>Centre for Arctic Studies at RUC</u>  <u>Centre for Gender, Power and Diversity</u> (In danish)  <u>Centre for research of Public-Private Collaboration</u>  <u>Centre for Tourism Research</u>  <u>VELNET - The Danish National Network for Welfare</u>	<u>Changing Societies: Welfare and Diversity</u>  <u>Economic Policy, Institutions and Change</u>  <u>Globalization and Europeanisation</u>  <u>Global Political Sociology</u>  <u>Innovation in Services and Experiences</u>  <u>International Development</u>

<sup>1</sup> Danish word. Cannot be translated to the english word "institutes". Most equivalent to "faculties", although translated officially by Roskilde University to "departments"



	<u>Communication</u> <u>Organizing Communication and Digitization</u> <u>Communication, Journalism and Social Change</u> <u>Research Group for Criminal Justice Ethics</u> <u>Language &amp; Learning</u> <u>Science Studies</u> <u>Visual Culture and Performance Design</u> <u>Memory and Uses of Pasts</u> <u>Aesthetic Culture</u> <u>Centre for Digital Citizenship</u>	<u>Psychology</u> <u>Centre for Social Entrepreneurship</u> <u>Research Centre in Health Promotion</u> <u>Centre for Nature and National Park Research (In danish)</u>	<u>Programming, Logic and Intelligent Systems</u> <u>Space, Place, Mobility and Urban Studies</u> <u>Subject, Technology and Social Practice</u> <u>Health Promotion and Health Strategies</u> <u>Education, Social Inclusion and Business</u>			<u>State Studies</u> <u>Research Centre for Life with a Mobility Disability</u>	<u>Research Group</u> <u>Management and Organisation</u> <u>Power, Identity and Critique</u> <u>Roskilde School of Governance</u> <u>Social Dynamics and Change</u> <u>Transformation and Ordering of Political Institutions</u> <u>National Network of Welfare Studies</u>
Not under any department	<i>Research centres:</i> <u>Centre for Interdisciplinary Research and Education in Circular Economy and Sustainability - CIRCLES</u> <u>Centre for Research on Problem-oriented Project Learning</u> <u>Centre for Big Data, Centre for Investigative Journalism</u> <u>Centre for Virtual Learning Technologies</u>						

## Organization of research faculties (Sektionen), departments (Fachbereiche), groups and professorships<sup>2</sup> at Konstanz University

Section 1: Faculty of Sciences						Section 2: Faculty of Humanities				Section 3: Faculty of Politics, Law and Economics				
Departments						Departments				Departments				
<u>Mathematics and Statistics</u>	<u>Computer and Information Science</u>	<u>Physics</u>	<u>Chemistry</u>	<u>Biology</u>		<u>Psychology</u>	<u>Philosophy</u>	<u>History, Sociology, Sport Science and Empirical Educational Research</u>	<u>Literature, Arts and Media Studies</u>	<u>Linguistics</u>	<u>Politics and Public Administration</u>	<u>Law</u>		<u>Economics</u>
9 Groups and Professorships	16 Groups and Professorships	16 Groups and Professorships	18 Groups and Professorships	29 Groups and Professorships	1 Research Center	9 Groups and Professorships	6 Groups and Professorships	30 Groups and Professorships	14 Groups and Professorships	12 Groups and Professorships	19 Groups and Professorships	18 Groups and Professorships	5 Research Centers	25 Groups and Professorships
					<u>Bioimaging Centre</u>						<u>Center for data and methods</u>		<u>Institute for legal fact research</u>  <u>Research Centre Immigrati</u>	

<sup>2</sup> For a full list of all groups and professorships, please see appendix 9.

													<u>on &amp; Asylum Law (FZAA)</u>  <u>Constanc e Seminar on Legal Development</u>  <u>Law Study Society Konstanz</u>  <u>Konstanz er Inventar</u>	
Interdisciplinary Research Institutions - not under any department	<p><b>Clusters of Excellence</b>  <u>Centre for the Advanced Study of Collective Behaviour</u>  <u>The Politics of Inequality</u></p> <p><b>Collaborative Research Centres (CRC)</b>  <u>Anisotropic Particles as Building Blocks: Tailoring Shape, Interactions and Structures</u>  <u>Fluctuations and Nonlinearities in Classical and Quantum Matter beyond Equilibrium</u>  <u>Chemical and Biological Principles of Cellular Proteostasis</u>  <u>Quantitative Methods for Visual Computing</u></p> <p><b>Research Groups</b>  <u>Media and Participation. Between Demand and Entitlement</u>  <u>Questions at the Interfaces</u>  <u>German-Austrian(-Swiss) International Research Group "New Insights into Bcl-2 family interactions: from biophysics to function"</u></p> <p><b>Research Centres</b>  <u>Center for Alternatives to Animal Testing - Europe (CAAT-Europe)</u></p>													

Centre for Cultural Inquiry  
Centre for Multilingualism  
Centre for Quantitative Methods and Survey Research  
Centre for Applied Photonics (CAP)  
Forschungsinstitut Gesellschaftlicher Zusammenhalt (FGZ)  
Dr. K. H. Eberle Research Centre "European Cultures in a Multipolar World"

**Associated Institutes**

TWI Thurgauer Wirtschaftsinstitut  
Lurija-Institut  
Biotechnologie Institut Thurgau

**Research Training Groups**

Integrated Research Training Group within CRC 1214 "Anisotropic Particles as Building Blocks: Tailoring Shape, Interactions and Structures"  
Integrated Research Training Group within TRR 161 "Quantitative Methods for Visual Computing"  
Integrated Research Training Group within CRC 1432 "Fluctuations and Nonlinearities" (FaN)  
GRK 2272: Research Training Group "R3 - Responses to Biotic and Abiotic Changes, Resilience and Reversibility of Lake Ecosystems"

**Institutions in the Context of supporting early Career Researchers**

Zukunftskolleg  
Graduate School of Decision Sciences  
Graduate School of the Social and Behavioural Sciences  
Konstanz Research School Chemical Biology (KoRS-CB)  
Graduate Research Programme »Changing Frames«

For the research profile of the University of Konstanz, see also <https://www.uni-konstanz.de/en/research/research-profile/>

### Organization of Educational and practical research units (EPRU) at New Bulgarian University, managed by Departments<sup>3</sup>

Department of Cognitive Science and Psychology (DCSP)		Department of Archeology (DArch)	Department of Art History and Cultural History (DAHCH)	Department of Administration and management (DAM) and Economics Department (ED)	Department of Philosophy and Sociology (DPhS)	Department of Health Care and social work (DHSW)	Department of Cinema, Advertising and Show Business (DCAShB), together with Department of Anthropology (DAnth)	Department of History (DH)	Department of Informatics (DI)	Department of Political Science (DPS)
<i>Labs</i>	<i>Centres</i>	<i>Labs</i>	<i>Centres</i>	<i>Trainings</i>	<i>Centres</i>	<i>Centres</i>	<i>Centres</i>	<i>Centres</i>	<i>Labs</i>	<i>Labs</i>

<sup>3</sup>All labs or centres, that don't have own page could be found on the following link, with a short brief of their characteristics: <https://nbu.bg/bg/za-nbu/izsledvanig-i-uslugi/uchebno-prakticheski-i-izsledovateliski-zvena-kym-departamentite-na-nbu> :

<p>LABORATORY OF EXPERIMENTAL PSYCHOLOGY</p> <p>LABORATORY OF NEUROSCIENCES</p> <p>LABORATORY FOR RESEARCH OF DECISIONS AND BEHAVIOR / DECISION LAB /</p> <p>LABORATORY "ARTIFICIAL COGNITIVE SYSTEMS"</p> <p>CHILDREN'S DEVELOPMENT LABORATORY</p>	<p><u>KNOW-HOW CENTER FOR ALTERNATIVE CHILD CARE</u></p>	<p>LABORATORY OF ARCHEOMETRY AND EXPERIMENTAL ARCHEOLOGY</p>	<p><u>NBU MUSEUM WITH DOCUMENTATION AND COMPARATIVE RESEARCH CENTER</u></p> <p><u>CENTER "BULGARIAN-EUROPEAN CULTURAL DIALOGUES"</u></p>	<p>TRAINING COMPANY</p>	<p>Center for the study of European values (virtual)</p>	<p>CENTER FOR THERAPY OF COMMUNICATIVE AND EMOTIONAL-BEHAVIORAL DISORDERS</p>	<p>"CENTER FOR VISUAL ANTHROPOLOGY"</p>	<p><u>PROF. PLAMEN S. TSVETKOV. (VIRTUAL)</u></p>	<p>LABORATORY FOR DIGITAL INNOVATIONS</p>	<p>LABORATORY FOR PUBLIC POLICIES (VIRTUAL/online)</p>
---	--	--	--	-------------------------	--	---	---	---	---	--

Not under any department

*Research Institutes or Centers:*

COMPUTER AND APPLIED LINGUISTICS RESEARCH CENTER

BULGARIAN INSTITUTE OF EGYPTOLOGY

COGNITIVE SCIENCE RESEARCH CENTER

INSTITUTE FOR MODERN PHYSICAL RESEARCH

MEDITERRANEAN AND EASTERN RESEARCH

CENTER BULGARIAN INSTITUTE FOR PERSONAL RELATIONS

SOUTHEAST EUROPEAN CENTER FOR SEMIOTIC RESEARCH

## Organization of Educational and practical research units (EPRU) at New Bulgarian University, managed by Schools<sup>4</sup>

<u>School of General Studies</u>		<u>School of Undergraduate Studies</u>		<u>School of Graduate Studies</u>		<u>School of Distance, Digital and Continuing Education</u>	<u>School of Professional and Continuing Learning</u>
<i>Labs</i>	<i>Studios</i>	<i>Labs</i>	<i>Centres and Studios</i>	<i>Labs</i>	<i>Centres</i>	<i>Labs</i>	<i>Centres</i>
<u>APPLE Laboratory</u>	CERAMICS STUDIO  EXPERIMENTAL ART STUDIO IN FASHION	ANIMATED CINEMA LABORATORY/ Cartoon laboratory  GEOLOGY LABORATORY  <u>GRAPHIC DESIGN LABORATORY</u>	<u>EDUCATIONAL-PRACTICAL AND RESEARCH CENTER FOR COMPUTER MUSIC AND SOUND DESIGN "STANISLAV STANCHEV-STANLEY"</u>  <u>RADIO STUDIO UNIVERSITY FILM CENTER</u>  <u>RADIO AND TV CENTER, NBU</u>	LABORATORY OF MARINE BIOLOGY  LABORATORY FOR SEMIOTIC AND SOCIOLOGICAL RESEA	STUDENT PSYCHOSOCIAL CENTER  NBU DOCTORAL SCHOOL	Laboratory for linguistic technologies	<u>FRANCOPHONE CENTER FOR ACADEMIC ACHIEVEMENTS</u>

<sup>4</sup>All labs or centres, managed by the Schools of NBU, that don't have own page could be found on the following link, with a short brief of their characteristics:  
<https://nbu.bg/bg/za-nbu/izsledvaniq-i-uslugi/uchebno-prakticheski-i-izsledovateliski-zvena-kym-fakultetite-na-nbu>



		LABORATORY FOR NATURAL DISASTERS AND RISKS  LABORATORY OF PHOTOGRAPHY		RCH			
--	--	---	--	-----	--	--	--

### Aegean University Research Structure

School of Social Sciences	School of the Environment	School of Business	School of Engineering	School of Sciences	School of Humanities
<u>Dep. of Social Anthropology and History:</u> 4 Labs -1 observatory  <u>- Laboratory for Ethnographic Approaches to the Study of Language</u>	<u>Dep. of Environment:</u> 9 Labs  <u>-Remote Sensing Laboratory</u>  <u>-Regional and Insular</u>	<u>Dep. of Business Administration:</u> 5 Labs  <u>-Management, Entrepreneurship &amp; Innovative Education</u>	<u>Dep. of Information and Communication Systems Engineering:</u>  6 Labs	<u>Dep. of Mathematics:</u> 5 Labs  <u>-Laboratory of Didactics of Mathematics and Learning</u>	<u>Dep. of Primary Education:</u> 6 Labs -1 Res group  <u>-Linguistics laboratory</u>  <u>-Mathematics, Didactics and</u>

<p>- <u>Family and Kinship Studies Lab</u></p> <p>- <u>History Lab</u></p> <p>- <u>Ethnography Lab</u></p> <p><u>Observatory of the Refugee and Migration Crisis in the Aegean</u></p>	<p><u>Development Laboratory</u></p> <p>-<u>Water and Air Quality Laboratory</u></p> <p>- <u>Biodiversity Conservation Laboratory</u></p> <p>-<u>Laboratory of Applied Economics of the Environment</u></p> <p>- <u>Waste Management Laboratory</u></p> <p><u>Research Centre of Environmental Communication and Education</u></p> <p>-<u>Laboratory for Environmental Policy and Strategic Envir.Management</u></p> <p>- <u>Energy Management Laboratory</u></p>	<p><u>Laboratory</u></p> <p>-Quantitative Methods Laboratory (QMLab)</p> <p>-Laboratory of Logistics and Modeling of Operational Systems</p> <p>-Growth Transformation &amp; Value Engineering (WAVE) Lab</p> <p>-Laboratory of Tourism Research and Studies (LTRS/ETEM)</p>	<p>-<u>Information &amp; Communication Systems Security - Info Sec Lab</u></p> <p>-<u>Computer &amp; Communication Systems CCSL</u></p> <p>-<u>Information Systems - Is Lab</u></p> <p>-<u>Artificial Intelligence - Ai Lab</u></p> <p><u>DataBase LAB</u></p> <p><u>Geometry, Dynamical Systems &amp; Cosmology</u></p>	<p><u>Technologies</u></p> <p>-<u>Laboratory of Applied Mathematics and Mathematical Modelling</u></p> <p>-<u>Laboratory of Free Software and Digital Typography</u></p> <p>-<u>Multimedia Laboratory</u></p> <p>-<u>Linux Laboratory</u></p>	<p><u>Multimedia Laboratory</u></p> <p>-<u>Laboratory of Artistic &amp; Cultural Education</u></p> <p>-<u>Natural Sciences Laboratory</u></p> <p>-<u>Laboratory of Psychology, Educational Research and Media in Education</u></p> <p>-<u>Laboratory of History and Social Sciences</u></p> <p><u>Cine Science</u></p>
<p><b><u>Dep. of Sociology</u></b> 6 Labs -1 centre</p>	<p><b><u>Dep. of Marine Sciences:</u></b> 6 Labs -1 Research Group</p>	<p><b><u>Dep. of Shipping, Trade and Transport:</u></b> 5 Labs</p>	<p><b><u>Dep. of Financial and Management Engineering:</u></b> 9 Labs</p>	<p><b><u>Dep. of Statistics and Actuarial-Financial Mathematics:</u></b> 2 Labs</p>	<p><b><u>Dep. of Pre-school education and Educational Design:</u></b></p>

<p><u>-Laboratory of Social Informatics, Statistics and Research Infrastructures</u></p> <p><u>-Laboratory of Social &amp; Political Institutions</u></p> <p><u>-Laboratory of the Sociology of Youth, Leisure and Sports</u></p> <p><u>-Sociological and Cultural Digital Documentation Lab</u></p> <p><u>-Sociology of Labor Academic Laboratory</u></p> <p><u>-Laboratory of Collective Actions and Social Movements</u></p> <p><u>North Aegean European Information Centre</u></p>	<p><u>-Environmental Quality and Geospatial Applications</u></p> <p><u>-Marine Biodiveristy and Ecosystems Management</u></p> <p><u>-Ichthyology, Aquaculture and Fish Diseases</u></p> <p><u>-Ecology and Systems' Dynamics</u></p> <p><u>-Physical &amp; Chemical Oceanography</u></p> <p><u>-Coastal Morphodynamics- Management &amp; Marine Geology</u></p> <p><u>Marine Remote Sensing Group.</u></p>	<p><u>-Laboratory in Research in Shipping and Port Management (ReShip)</u></p> <p><u>-Laboratory of Applied Economics and Finance (LabAEF)</u></p> <p><u>-Laboratory of Geographic Information Ststems, Geo-Economy and Geopolitics (GEOPOL Lab)</u></p> <p><u>- Laboratory of Informatics and New Technologies in Shipping, Transport and Insular Development (LINTSTID)</u></p> <p><u>-Laboratory of Research on Transport and Decision-Making (TRANSDEM)</u></p>	<p><u>-The Management and Decision Engineering Laboratory (MDE-Lab)</u></p> <p><u>-Design, Operations, &amp; Production Systems Lab (DeOPSys)</u></p> <p><u>-Reliability Engineering Laboratory (RELab)</u></p> <p><u>-Applied Economics and Technology Studies Laboratory (ECO-TECH)</u></p> <p><u>-Research Laboratory of Applied Physical Sciences (ReLAPS)</u></p> <p><u>-Environmental Quality and Technology Laboratory (EQTL)</u></p> <p><u>-Information Management Lab (i4m Lab)</u></p> <p><u>-Laboratory of Mechanics, Materials and Processes (L2MP)</u></p> <p><u>-Intelligent Data Exploration and Analysis</u></p>	<p><u>-Laboratory of Statistics and Data Analysis</u></p> <p><u>-Laboratory of Actuarian and Financial Mathematics</u></p>	<p>7 Labs</p> <p><u>-Learning Technology and Educational Engineering Laboratory</u></p> <p><u>-Laboratory of Social and Educational Research</u></p> <p><u>-Laboratory of Educational &amp; Psychological Research and their Applications</u></p> <p><u>-Laboratory of Children's Book, Discourse and Theatre Game</u></p> <p><u>-Laboratory of Research on Practical Philosophy (L.R.P.Ph.)</u></p> <p><u>-Laboratory of Experimental Psychology, Psychometric Research and Clinical Applications</u></p> <p><u>-Laboratory of Applied Research for Environmental Education</u></p>
--	--	---	--	--	--

			<u>Laboratory (IDEAL)</u>		
<p><b><u>Dep. of Cultural Technology and Communication:</u></b> 5 Labs</p> <p><u>-Image, Sound and Cultural Representation Lab</u></p> <p><u>-Museology Lab</u></p> <p><u>-Intelligent Systems Research Lab</u></p> <p><u>-Cultural Heritage Management Lab</u></p> <p><u>-Privacy Engineering and Social Informatics Lab</u></p>	<p><b><u>Dep. of Food Science and Nutrition:</u></b> 3 Labs</p> <p><u>- LABORATORY OF BIOLOGY, MICROBIOLOGY AND BIOTECHNOLOGY OF FOODS (LBMBF)</u></p> <p><u>- LABORATORY OF CONSUMER RESPONSES AND SENSORY PERCEPTION OF FOOD &amp; DRINKS</u></p> <p><u>-SUSTAINABLE AGRI-FOOD and SMART FARMING LABORATORY (SAFSFL)</u></p>		<p><b><u>Dep. of Product and System Design Engineering:</u></b> 4 Labs</p> <p><u>-Interactive Systems Design Lab (ISC)</u></p> <p><u>-Integrated Industrial Design Lab (INDEL)</u></p> <p><u>-Complex Systems and Service Design Lab/ CSSD</u></p> <p><u>-Colour &amp; Drawing Lab (CDL)</u></p>		<p><b><u>Dep. of Mediterranean Studies:</u></b></p> <p>6 Labs-2 research groups-2centers-units</p> <p><u>-Laboratory of the Ancient World of Eastern Mediterranean</u></p> <p><u>-Laboratory of Archaeometry</u></p> <p><u>-Laboratory of Linguistics of the Southeastern Mediterranean</u></p> <p><u>-Laboratory of Mediterranean Politics</u></p> <p><u>-Laboratory of Environmental Archaeology &amp; Preventive Conservation</u></p> <p><u>-Laboratory of Informatics</u></p>
					<p><u>Archaeological Excavations</u></p>

					<p><i>Egyptology Research Group (Aegean Egyptology)</i></p> <p><i>-Research Unit for European and International Politics</i></p> <p><i>- Research Center for Yellow River Cultures (RCRYC)</i></p>
--	--	--	--	--	--

<b>Paris 8 - Research Structure: Training and Research Units (UFR*) and Departments</b> * Despite its name our "UFR" are not in charge of research in Paris 8.											Institutes			IUT	
<u>economic management (AES-EG)</u>	<u>arts, philosophy, aesthetics</u>	<u>Culture and Communication</u>	<u>Law</u>	<u>Foreign Languages and Cultures (LLCE-LEA)</u>	<u>Digital Sciences and Technologies (STN)</u>	<u>Psychology</u>	<u>Education, Psychology and French as a Foreign Language (SEPF)</u>	<u>language sciences (SDL)</u>	<u>erITES (studies, research and engineering in territories - environments -</u>	<u>Texts and Societies</u>	French Institute of Geopolitics (IFG)	Institute for European Studies (IEE)	Distance Learning Institute (IED)	IUT of Montreuil	IUT of Tremblay-en-France

									<u>societi</u> <u>es)</u>						
Department s	Departm ents	Departme nts	Depart ments	Departmen ts	Departme nts	Depart ments	Departm ents	Depart ments	Depart ments	Departm ents					

	Plastic arts		Arab studies					Geography Department			
	Image arts and technologies		Anglophone studies								
	Cinema		Germanic Studies					Master Mediterranean, Maghreb, Europe			
	Dance		Hebrew Studies								
	Music		Hispanic and Hispano-American Studies								
	Philosophy		Italian studies					Engineering Department - Cognition - Handicap			
	Photography		Portuguese-speaking studies								
	Theater		Slavic Studies								
	ArTeC										

**Research Units (UR)**

UR Human and Artificial Cognitions (CHArt)

UR Cognitive Function and Dysfunction: Ages of Life (DYSCO)

UR Dionysian Economics Laboratory (LED)

Center for the History of Medieval and Modern Societies (MéMo)

UR Aesthetics, musicology, dance and musical creation (MUSIDANSE)

UR Laboratory of Studies and Research on Contemporary Logics of Philosophy (LLCP)

UR Aesthetics, Sciences and Technologies of Cinema and Audiovisual (ESTCA)

UR Image Arts and Contemporary Art (AIAC)

UR Scenes of the World (Scènes du monde)

UR Center for Media, Technology and Internationalization Studies (CEMTI)

UR Paris Center for Legal Research 8 (CRJP8)

UR English-speaking critical transfers (TransCrit)

UR German worlds: history of ideas and representations

UR Laboratory of Romanesque Studies (LER)

UR Laboratory Paragraph

UR QUARTZ

UR Saint-Denis Advanced Computer Science Laboratory (LIASD)

UR Parisian Laboratory of Social Psychology (LAPPS)

UR Laboratory of Psychopathology and Neuropsychology (LPN)



UR Interuniversity Laboratory Experience, Cultural Resources, Education (EXPERICE)

UR Clinical section

UR Interdisciplinary Center for Research, Culture, Education, Training, Work (CIRCEFT)

UR Literary Factory (Fablitt)

UR Center for Geopolitical Research and Analysis (IFG-LAB)

Joint Research Units (UMR)

UMR 8238: Laboratory for Gender and Sexuality Studies (LEGS)

UMR 8244: Institute for the History of Present Time (IHTP)

UMR 7217: Paris Center for Sociological and Political Research (CRESPPA)

UMR 7023: Formal structures of language (SFL)

UMR 7218: Laboratory Architecture City Urbanism Environment (LAVUE)

UMR 7539: Analysis, geometry and application laboratory (LAGA)

UMR 7041: Archaeology and Sciences of Antiquity (ArScAn)

UMR 8533: Institutions and Historical Dynamics of the Economy and Society (IDHES)

UMR 7533: Social Dynamics and Recomposition of Spaces Laboratory (LADYSS)

Other Research Structures

Laboratory of uses in digital information technologies (LUTIN)

House of Human Sciences Paris Nord (MSH Paris Nord)

Group for the Study of Globalization and Development (GEMDEV)

Appendix X



# Research Projects under Horizon 2020. Societal Challenges.

## Societal Challenge program: Project titles

Roskilde	Konstanz	Paris 8	NBU	Aegean
<u>Building pathways towards FOOD 2030-led urban food policies</u>	<u>An Integrated European 'Flagship' Program Driving Mechanism-based Toxicity Testing and Risk Assessment for the 21st Century</u>	<u>Developing Participatory Spaces using a Multi-stage, Multi-level, Multi-mode, Multi-lingual, Dynamic Deliberative approach (M4D2)</u>	<u>Transforming Unsustainable management of soils in key agricultural systems in EU and China. Developing an integrated platform of alternatives to reverse soil degradation.</u>	<u>Multiple-use-of Space for Island Clean Autonomy</u>
<u>Educating the next generation of professionals in the agrifood system</u>	<u>RISK assessment of chemicals integrating HUMAN centric Next generation Testing strategies promoting the 3Rs</u>	<u>UNCHARTED: Understanding, Capturing and Fostering the Societal Value of Culture</u>	<u>EUROPEAN MEDIA PLATFORMS: ASSESSING POSITIVE AND NEGATIVE EXTERNALITIES FOR EUROPEAN CULTURE</u>	<u>Evaluation, control and Mitigation of the EnviRonmental impacts of shippinG Emissions</u>
<u>Transforming into Open, Innovative and Collaborative Governments</u>	<u>PRedictive In-silico Multiscale Analytics to support cancer personalized diaGnosis and prognosis, Empowered by imaging biomarkers</u>		<u>Effective practices in education, mental health and psychosocial support for the integration of refugee children</u>	<u>Title: Holistic Approach for Providing Spatial &amp; Transport Planning Tools and Evidence to Metropolitan and Regional Authorities to Lead a Sustainable Transition to a New Mobility Era</u>
<u>Closing the loop for urban material flows</u>	<u>Cost reduction and enhanced Performance of PV systems</u>		<u>Between the representation of the crisis and the crisis of representation. How crisis changed the symbolic background of European societies and identities. Implication for policies and</u>	<u>Renewable Energy for self-sustAinable island CommuniTies</u>

			<u>policy making</u>	
<u>Redesigning European cropping systems based on species MIXtures</u>	<u>Understanding value co-creation in public services for transforming European public administrations</u>		<u>Migration Impact Assessment to Enhance Integration and Local Development in European Rural and Mountain Areas</u>	<u>Multi-source Big Data Fusion Driven Proactivity for Intelligent Mobility</u>
<u>Understanding value co-creation in public services for transforming European public administrations</u>	<u>EU Differentiation, Dominance and Democracy</u>		<u>Evaluation of the Common European Asylum System under Pressure and Recommendations for Further Development</u>	<u>PALAEMON – A holistic passenger ship evacuation and rescue ecosystem</u>
<u>Disruptive Technologies Supporting Labour Market Decision Making</u>	<u>Novel Testing Strategies for Endocrine Disruptors in the Context of Developmental NeuroToxicity</u>			<u>End-to-End Approach for Mobility-as-a-Service tools, business models, enabling framework and evidence for European seamless mobility</u>
<u>Skills and Integration of Migrants, Refugees and Asylum Applicants in European Labour Markets</u>	<u>Development of prescriptive Analytics based on artificial intelligence for iAMS</u>			<u>Advancing Alternative Migration Governance</u>
<u>Facilitating Multi-level governance for energy efficiency</u>	<u>Video analysis for Investigation of Criminal and Terrorist Activities</u>			<u>BUSINESS MODELS FOR ENHANCING FUNDING AND ENABLING FINANCING OF INFRASTRUCTURE IN TRANSPORT</u>

<u>Fostering sustainable legume-based farming systems and agri-feed and food chains in the EU</u>	<u>The Future of European Social Citizenship</u>			<u>Demonstration of water loops with innovative regenerative business models for the Mediterranean region</u>
<u>Social Protection Innovative Investment in Long Term Care</u>	<u>Analysis System for Gathered Raw Data</u>			<u>RESPOND: Multilevel Governance of Mass Migration in Europe and Beyond</u>
<u>SOLIDUS: "Solidarity in European societies: empowerment, social justice and citizenship"</u>	<u>The Choice for Europe since Maastricht. Member States' Preferences for Economic and Financial Integration</u>			<u>Social and innovative Platform On cultural Tourism and its potential towards deepening Europeanisation</u>
<u>Preventing and responding to conflict: developing EU CIVilian CAPabilities for a sustainable peace</u>	<u>Intelligent solutions 2ward the Development of Railway Energy and Asset Management Systems in Europe</u>			<u>WORKFORCE EUROPE - TRANSFORMATION AGENDA FOR TRANSPORT AUTOMATION</u>
<u>Improving the Effectiveness of the Capabilities (IEC) in EU conflict prevention</u>				<u>The Once Only Principle Project</u>

<u>Co Production and Co Governance: Strategic Management, Public Value and Co Creation in the Renewal of Public Agencies across Europe</u>				
--	--	--	--	--

Appendix IX



# Overview of Professorships at UKON



## Organization of research faculties (Sektionen), departments (Fachbereiche), groups and professorships at Konstanz University

Section 1: Faculty of Sciences						Section 2: Faculty of Humanities				Section 3: Faculty of Politics, Law and Economics			
Departments						Departments				Departments			
<u>Mathematics and Statistics</u>	<u>Computer and Information Science</u>	<u>Physics</u>	<u>Chemistry</u>	<u>Biology</u>	<u>Psychology</u>	<u>Philosophy</u>	<u>History, Sociology, Sport Science and Empirical Educational Research</u>	<u>Literature, Art and Media Studies</u>	<u>Linguistics</u>	<u>Politics and Public Administration</u>	<u>Law</u>		<u>Economics</u>
Groups and Professorships	Groups and Professorships	Groups and Professorships	Groups and Professorships	Groups and Professorships	Groups and Professorships	Groups and Professorships	Groups and Professorships	Groups and Professorships	Groups and Professorships	Groups and Professorships	Groups and Professorships	Research Centers	Groups and Professorships
Analysis / Mathematics in the natural sciences	Bioinformatics and Information Mining	Light and Matter Soft Matter	Böttcher Group - Biological Chemistry	Professorship for Aquatic Ecology and Evolution	Professorship for Social Psychology	Professorship of Theoretical Philosophy with a special focus on Philosophy of Language and Mind	Ancient History  Archaeology of Ancient Mediterranean and Near Eastern Cultures	<b><u>British Studies and American Studies</u></b>	General linguistics with emphasis on phonetics  slavic linguistics  general linguistic and computational linguistics  general linguistics with emphasis on phonology	<b>Center for data and methods</b> Elections and democracy  Survey Research  Political Methodology  Computational Social Science  <b>Democracy and Public Policy</b>	Civil Law, Labor Law and Social Security Law  Public Law with International Orientation Civil law with personal and corporate tax law  Civil law, commercial and corporate law, business	<u>Institute for legal fact research</u>  <u>Research Centre Immigration &amp; Asylum Law (FZAA)</u>  <u>Constance Seminar on Legal Development</u>  <u>Law Study Society Konstanz</u>	Chair of General Business Administration and Marketing  Chair of Applied Research in Economics  Chair of Business Education and Human



			<p>Mathies Group - Magnetic Resonance Spectroscopy</p> <p>Mecking Group - Chemical Materials Science</p> <p>Peter Group - Theoretical and Computer-Aided Chemistry</p> <p>Ruiz Agudo Group - Physical Chemistry</p> <p>Winter Group - Inorganic Chemistry: Organometallic Chemistry</p> <p>Witte mann Group - Colloid Chemistry</p> <p>Wittmann Group - Organic and Bioorganic Chemistry</p> <p>Zumbusch Group -</p>	<p>Applied Bioinformatics</p> <p>Professorship for Cell Biology</p> <p>Professorship for Plant Physiology and Biochemistry</p> <p>Professorship for Neuroethology</p> <p>Professorship for Ecology</p> <p>Professorship for Plant Ecophysiology</p> <p>Professorship for Immunology and Cell Biology</p> <p>Professorship for In-Vitro Toxicology and Biomedicine</p> <p>Professorship for Toxicology and Biochemistry</p>			<p>social research and higher education research</p> <p>Professorship for general sociology and macrosociology</p> <p>Professorship for general sociology and cultural sociology</p> <p>Professorship for sociology with focus on gender studies</p> <p>Lecture for social scientific statistics</p> <p><b>Ethnology</b> Professorship for ethnology and cultural anthropology</p> <p>Professorship for ethnology and political anthropology</p> <p>junior professorship</p>	<p><b>Media Studies</b> Professorship for media studies x3</p>		<p>Politics</p> <p>Comparative Politics of non-democratic States</p> <p>Associate Professorship for International Relations European Governance</p> <p><b>Center for Management and Public Administration</b> Management, especially Strategy and Leadership</p> <p>Organizational Studies</p> <p>Public Administration</p> <p>Politics and Public Administration</p> <p>Public Administration / Organization Theory</p> <p>Management, especially Social Responsibility</p>	<p>Civil Law, International Private and Procedural Law, Comparative Law</p> <p>Criminal Law, Criminal Procedure Law, Economic Criminal Law and Criminology</p> <p>Public Law, European Law and International Law</p> <p>Civil Law, Commercial, Corporate and Business Law and Comparative Law</p> <p>Criminal law, criminal procedure law, comparative criminal law, medical criminal law and legal theory</p> <p>Civil Law, Ancient Legal History, Roman Law</p>		<p>Macroeconomics</p> <p>Chair of Macroeconomics</p> <p>Chair of Microeconomic Theory</p> <p>Chair of Economics and Econometrics</p> <p>Chair for Political Economy</p> <p>Chair of Business and Economics Education I</p> <p>Chair of Business and Economics Education II</p> <p>Chair of Economic and Social Policy</p> <p>Junior Professorship in Accounting</p>
--	--	--	--	--	--	--	--	--	--	--	---	--	---

			Physical Chemistry	<p>y</p> <p><u>Professorship</u> <u>ip</u> <u>Bioimaging</u> <u>Centre</u></p> <p>Professorship for Biophysics and Structural Biology</p> <p>Professorship for Molecular Genetics</p> <p>Professorship for Zoology and Evolutionary Biology</p> <p>Professorship for Environmental Physics</p> <p>Professorship for Biochemistry</p> <p>Professorship for Limnic Microbiology</p> <p>Professorship for Chemical Ecology</p> <p>Professorship for Cellular</p>			<p>p for ethnology with focus on cultures of economy</p> <p><b><u>Empirical educational research</u></b></p> <p>Professorship for development and education in early childhood</p> <p>professorship for educational science</p> <p>professorship of inclusive education assistant professorship for teaching research with focus on heterogeneity</p> <p>assistant professorship for empirical educational research</p> <p><b><u>Sport Science</u></b></p> <p>professorshi</p>			y	<p>and Modern Private Law History</p> <p>Public Law with Subsidiary Fields</p>		<p>Junior Professorship of Educational and Labour Economics</p> <p>Junior Professorship for Personal Economics</p> <p>Junior Professorship in Economics</p> <p>Junior Professorship in Business and Economics Education, Focus on Heterogeneity</p> <p>Junior Professorship for Business and Economics Education</p> <p>Junior Professorship in</p>
--	--	--	--------------------	---	--	--	--	--	--	---	--	--	---

				Proteostasis and Mass Spectrometry Professorship for Genetics of Adaption in Aquatic Systems			<p>p of sport psychology</p> <p>professorship of training and movement science</p> <p>professorship of social and health sciences</p> <p>professorship of motor development in childhood and adolescence</p>							Public Economics
--	--	--	--	--	--	--	--	--	--	--	--	--	--	------------------

<p>Interdisciplinary Research Institutions</p>	<p><b>Clusters of Excellence</b>  <u>Centre for the Advanced Study of Collective Behaviour</u>  <u>The Politics of Inequality</u></p> <p><b>Collaborative Research Centres (CRC)</b>  <u>Anisotropic Particles as Building Blocks: Tailoring Shape, Interactions and Structures</u>  <u>Fluctuations and Nonlinearities in Classical and Quantum Matter beyond Equilibrium</u>  <u>Chemical and Biological Principles of Cellular Proteostasis</u>  <u>Quantitative Methods for Visual Computing</u></p> <p><b>Research Groups</b>  <u>Media and Participation. Between Demand and Entitlement</u>  <u>Questions at the Interfaces</u>  <u>German-Austrian(-Swiss) International Research Group "New Insights into Bcl-2 family interactions: from biophysics to function"</u></p> <p><b>Research Centres</b></p>
--	---

Center for Alternatives to Animal Testing - Europe (CAAT-Europe)  
Cultural studies research centre  
Centre for Multilingualism  
Centre for Quantitative Methods and Survey Research  
Centre for Applied Photonics (CAP)  
Forschungsinstitut Gesellschaftlicher Zusammenhalt (FGZ)  
Dr. K. H. Eberle Research Centre "European Cultures in a Multipolar World"

**Associated Institutes**

TWI Thurgauer Wirtschaftsinstitut  
Lurija-Institut  
Biotechnologie Institut Thurgau

**Research Training Groups**

Integrated Research Training Group within CRC 1214 "Anisotropic Particles as Building Blocks: Tailoring Shape, Interactions and Structures"  
Integrated Research Training Group within TRR 161 "Quantitative Methods for Visual Computing"  
Integrated Research Training Group within CRC 1432 "Fluctuations and Nonlinearities" (FaN)  
GRK 2272: Research Training Group "R3 - Responses to Biotic and Abiotic Changes, Resilience and Reversibility of Lake Ecosystems"

**Institutions in the Context of supporting early Career Researchers**

Zukunftskolleg  
Graduate School of Decision Sciences  
Graduate School of the Social and Behavioural Sciences  
Konstanz Research School Chemical Biology (KoRS-CB)  
Graduate Research Programme »Changing Frames«